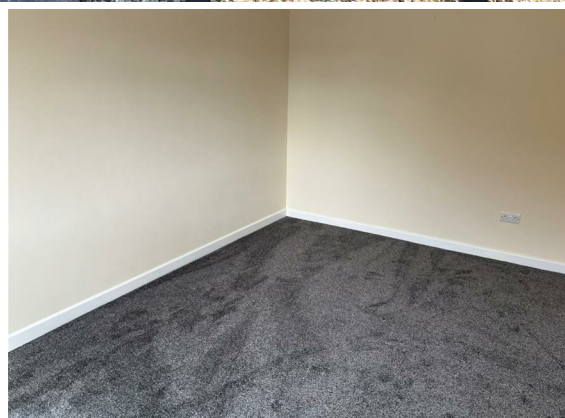




3 Bedroom House - End Terrace located in Broadway, Weymouth

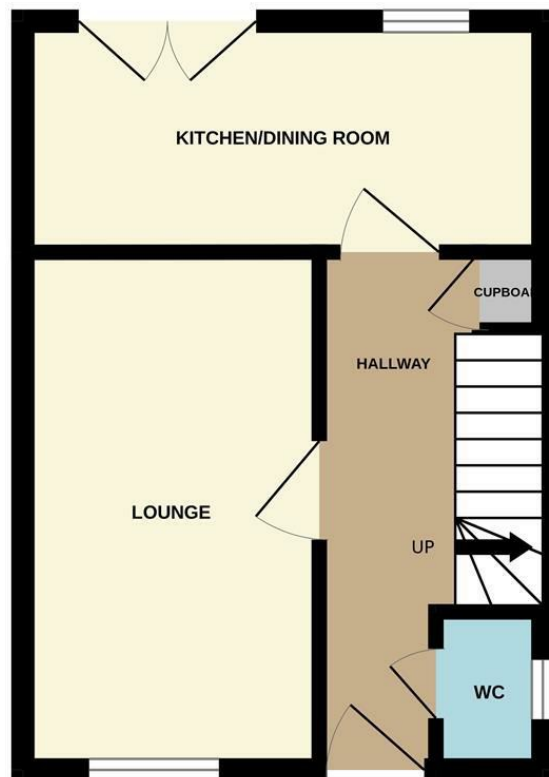
**Offers In The Region
Of £249,950**



**Roger
McGhee**
Estate Agents

PROFESSIONAL SERVICE
PERSONAL APPROACH

GROUND FLOOR



1ST FLOOR



Whilst every attempt has been made to ensure the accuracy of the floorplan contained here, measurements of doors, windows, rooms and any other items are approximate and no responsibility is taken for any error, omission or mis-statement. This plan is for illustrative purposes only and should be used as such by any prospective purchaser. The services, systems and appliances shown have not been tested and no guarantee as to their operability or efficiency can be given.
Made with Metropix ©2025

CONTACT

11 Frederick Place
St Thomas Street
Weymouth
Dorset
DT9 1NL

E: admin@rogermcghee.co.uk
T: 01305 779655
www.rogermcghee.co.uk

Energy Efficiency Rating		
	Current	Potential
Very energy efficient - lower running costs		
(92 plus) A		
(81-91) B		
(69-80) C		
(55-68) D		
(39-54) E		
(21-38) F		
(1-20) G		
Not energy efficient - higher running costs		
England & Wales EU Directive 2002/91/EC		